



PLASTIC RECYCLING SOLUTION 塑料回收解决方案

张家港埃威玛科技有限公司
Zhangjiagang Ivima Technology Co.,Ltd.



Tel: +86 -512-58579638 Fax: +86 -512-58636993
Contact Person: Daniel Hu
Phone No.: 086-18921955217
Email address: Admin@ivimatech.com
Website: www.ivimatech.com

Office address: Room 1802, Goutai Oriental Plaza,
Zhangjiagang City, Jiangsu Province, China
Factory address: Jinfeng Metallurgical Industrial Park,
Zhangjiagang City, Jiangsu Province, China

IVIMA COMPANY PROFILE

埃威玛科技有限公司坐落于国家级卫生文明城市——张家港，是一家集机械设计、新产品开发、生产和销售一体的专业机械厂家。

为了在激烈的市场竞争中取胜，公司潜心经营，开拓创新，在继承原有塑料机械产品的基础上，不断地开发新产品，在新兴的光伏、锂电池行业和环保行业等推广和应用。

公司一贯以“品质取信用户，技术和服赢得市场”为经营宗旨，不断开拓创新，在追求完美品质的同时，期待为广大用户提供最合适的产品。

Zhangjiagang Ivima Technology Co.,Ltd. Located in the national health and civilized city - Zhangjiagang, is a professional machinery manufacturer integrated the machine design, new products development, production and marketing.

In order to win in the fierce market competition, our company devoted ourselves to management and innovation, on the basis of original plastic machinery, we develop new products constantly, popularized them and applied them in the new industries such as photovoltaic industry, battery industry and environmental industry.

Our company always take the word "win the trust of clients with quality, win the market with technology and services" as our business aim, to develop and innovate new products continuously, at the same time of striving for perfect quality, hope to provide all the clients with the most suitable products.



重型破碎机
HEAVY TYPE CRUSHER

GWPS-Z系列重型破碎机专为满足苛刻要求及不易破碎回收材料而设计，厚度在3-30mm之间。主箱体采用牢固的焊接钢结构，经数控机床精密加工而成。主轴采用优质钢材加工而成，经动、静平衡校验，具有韧性好、工作中不易变形、工作状态稳定等特点。

GWPS series heavy crushers are designed specially for the recycling material which is not easy to be crushed and thickness 3-30mm. The main box of crusher is processed by precision machine exactly with the strong welding structure. The main axis is processed with high quality steel after verifying the balance. Good toughness, stable working state, low shaking are the main features.



型号 Model	进料口尺寸(mm) Feed mouth size	转子旋转直径 Rotor Diameter	主电机功率(kw) Main motor power	转刀数量 (件) Moving knife Qty.	定刀数量 (件) Fixed knife Qty.	生产能力(kg/h) Output
GWPS-Z 700	700×700	Φ500	22-37	6/10	4	500
GWPS-Z 800	800×800	Φ600	37-75	6/10	4	600
GWPS-Z 1000	1000×1000	Φ700	55-110	10/14	4/6	800
GWPS-Z 1200	1200×1000	Φ800	90-132	10/14/18	4/6	1000
GWPS-Z 1500	1500×1000	Φ1000	110-200	14/18	4/6	1200

强力破碎机
STRONG CRUSHER

GWPS-C爪刀型破碎机系列实用性广，主要用作破碎各种软硬塑胶，将不同形状的塑料破碎成粒状，再回收利用。该机整机采用精钢制作，结构紧凑，安全坚固耐用。特殊的爪刀转子设计，使得机器在破碎料时更加轻松容易。

GWPS-C claw knife type crusher series wide applicability, mainly used for crushing all kinds of soft and hard plastic, different types of plastic broken into granules, and then recycling. This series machine is made by high-quality steel and it is compact structural, safe and durable. Special claws blade rotor design, making the machine easier to crush materials.



型号 Model	进料口尺寸(mm) Feed mouth size	转子旋转直径 Rotor Diameter	主电机功率(kw) Main motor power	转刀数量 (件) Moving knife Qty.	定刀数量 (件) Fixed knife Qty.	生产能力(kg/h) Output
GWPS-C 300	420×270	Φ300	11	3×7	2×2	300-500
GWPS-C 350	480×340	Φ350	15	3×8	2×2	350-550
GWPS-C 380	660×400	Φ380	22	3×11	2×2	500-800

管材破碎机
Pipe Crusher

传统的破碎机对于破碎塑料塑料，型材已经木塑型材类制品存在一定困难，通常需要较大的破碎腔来破碎回收体积较大，数量较大的材料。几乎与地面平行的喂料斗，使较长材料的喂给极为简单方便。由于机器的转子能够自动抓牢待破材料。因此，不会存在材料阻塞的情况。

The traditional crusher for crushing plastics, profiles and WPC products existing certain difficulties. Normally, it needs large crushing cavity to crush large volume and quantities material. Thanks to the almost level feeding hopper, long pieces can be fed easily. Due to the rotor of the machine can automatically grasp crushed material. Therefore, there won't be material blocking.

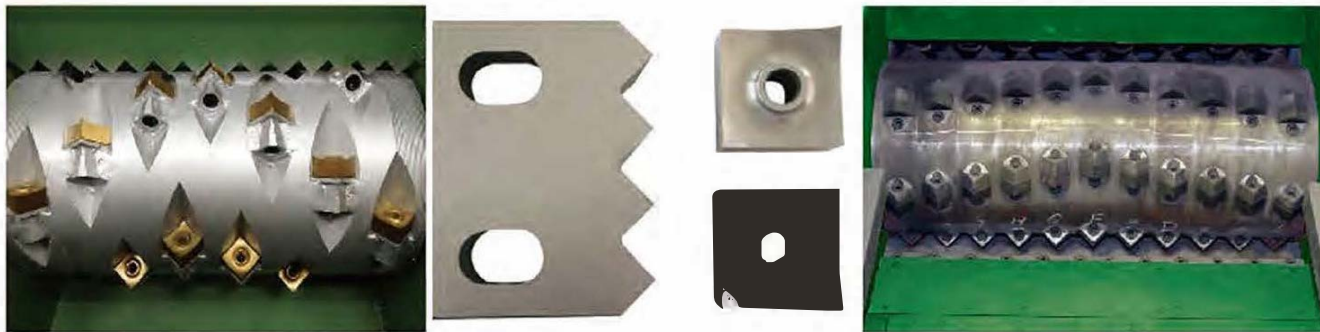


型号 Model	进料口尺寸(mm) Feed mouth size	转子有效宽度(mm) Rotor effective width	主电机功率(kw) Main motor power	转刀数量 (件) Moving knife Qty.	定刀数量 (件) Fixed knife Qty.	生产能力(kg/h) Output
GWPS-X300	150×300	300	11-22	5	2	300
GWPS-X400	240×420	400	22-37	24	2	400
GWPS-X600	300×600	600	45-75	5×3	4	500

单轴撕碎机
SINGLE-SHAFT SHREDDER

单轴撕碎机适用于废旧物料的回收破碎，如：大型的实心体块状塑料、成卷薄膜、块状木材、成捆纸张、成捆纤维、塑料容器等

GWSS-D shredder is mainly used to grind, crush and recycle the waste plastic. Materials suitable to be processed are: big solid block of plastic, film rollers, blocks of wood, packed paper and packed fiber, etc.



型号 Model	动刀回转直径(mm) Rotor swing diameter	转速(rpm) Rotor speed	电机功率(kw) Motor power	转子刀数量(pcs.) Rotor blade Qty.	定刀数(pcs.) Fixed blade Qty.	破碎腔最大尺寸(mm) Chamber siz max
GWSS-D 850	Φ435	37	37	60	6	700×730
GWSS-D 1200	Φ505	37	55	81	8	800×1010
GWSS-D 1500	Φ505	37	75	102	10	800×1290
GWSS-D 2000	Φ505	37	55×55	144	14	800×1850

双轴撕碎机
DOUBLE-SHAFT SHREDDER

本设备广泛用于印刷线路板、家电产品、医疗废弃物、城市生活垃圾、废旧轮胎等固体废弃物的回收加工的粉碎工序，由于采用了新型整体式刀片设计，效能高，材料适应性强，应用广泛。

GWSS-S series shredder is specially designed for crushing printed-wiring board, electrical appliance, post-consume waste, waste tyre in the field of recycling industry. Different screen hole is available for different processing requirement. Adopt superior whole body blade design, high efficiency, widely application.



型号 Model	刀盘回转直径(mm) Blade swing diameter	电机功率(kw) Motor power	粉碎腔尺寸(mm) Grinding chamber dimension
GWSS-S 600	Φ260	11-22	450×600
GWSS-S 800	Φ340	22-45	670×800
GWSS-S 1000	Φ340	30-55	670×1000
GWSS-S 1200	Φ340	(22-30)×2sets	670×1200
GWSS-S 1400	Φ400	(30-55)×2sets	710×1400
GWSS-S 1600	Φ400	(45-75)×2set s	710×1600

四轴撕碎机
FOUR-SHAFT SHREDDER

四轴撕碎机是基于市场需求发展的产物。它采用微电脑的自动化来达到自动启停，倒转和过载倒转的功能。它主要应用于撕碎有一定强度的轻薄金属、桶和垃圾，增加打包密度。以便它们的运输以及再利用。

Four-shaft shredder is developed based on market demand products. It adopts automatic control of microcomputer to set automatic start-up, stop, reverse and overload reversing control functions. It is mainly used for shredding light and thin metal with certain strength, barrel and waste garbage to increase its packing density for transportation and re-use.



型号 Model	主刀直径(mm) Main blade diameter	辅刀直径(mm) Assistant blade diameter	主轴转速(rpm) Main shaft speed	主刀数量(pcs) Main blade Qty.	辅刀数量(pcs) Assistant blade Qty.	刀片厚度(mm) Thickness of blades	电机功率(kw) Motor power	筛网直径(mm) Screen diameter
GWTL80	320	350	15-25	27	27	40	15+15	60
GWTL100	320	350	15-25	25	25	40	18.5+18.5	60
GWTL120	320	350	15-25	30	30	40	22+22	60

轮胎撕碎机
TIRE SHREDDER



轮胎粉碎机适用于汽车轮胎、卡车轮胎、电子垃圾、金属、木材、塑料、纸张等固体物料的粉碎。广泛应用于工业废物回收、医药回收、电子回收、城市固体废物回收、塑料回收、轮胎回收、造纸等行业。也适用于电视、洗衣机、冰箱外壳、大口径管道、管件、叉车夹板、轮胎、包装桶、车身、铝、铜、钢等大型固体物料的破碎。

Tire shredder is suitable for shredding solid materials, such as car tire, truck tire, e-waste, metal, wood, plastic, paper, etc. It is widely used in industrial waste recycling, medical recycling, electronic recycling, municipal solid waste recycling, plastic recycling, tire recycling, paper making industry, etc. It is also suitable for crushing the big solid material like television, washing machine, the shell of the refrigerator, big size pipe, pipe fittings, forklift splint, tires, packing barrel, vehicle body, aluminum, copper, and steel.

型号 Model	功率(kw) Power	主轴转速(rpm) Main shaft rotating speed	旋转直径(mm) Swing diameter	刀片厚度(mm) Blade thickness	机器尺寸(m) Dimension	机器重量(t) Weight
GWLS500	15	8-20	200	20	1.45*0.8*1.73	1.6
GWLS800	15*2	8-20	260	20	1.82*0.8*1.93	2.1
GWLS1000	22*2	8-20	300	30	3.7*1.55*2.7	6.5
GWLS1200	37*2	8-20	400	40	4.1*1.55*2.7	7.5
GWLS1500	55*2	8-20	530	50	4.5*2*2.9	13
GWLS1800	90*2	8-20	600	75	5.5*2.15*2.9	18

整管撕碎机
LONG PIPE SHREDDER



GWSS-Z系列撕碎机可用于直径1200mm的PE、PP、PVC管材撕碎。长度达3-6m的管材直接破碎，无需分割，其转速缓慢，运转平稳，各种管材放入水平的喂料槽中，喂料槽自动关闭由液压推进将管材推向轴中心进行破碎。该设备最主要的优势在于节省大量的分割人工及锯口浪费，节能降耗，安全高效，整个系统由PLC中心控制系统控制。

GWSS-Z series shredder is able to shred the PE, PP, PVC pipe with diameter 1200mm, the length of 3-6m pipe can be shredded directly without cutting. And the rotary speed is slow and stable. Variety of pipes is put into the flat feeding tank. The tanks closed automatically and push the pipe by hydraulic into the center axis for shredding. This shredder has the main advantage of energy saving safe and efficient and the system is controlled by PLC center control system.

型号 Model	投料口尺寸(mm) Feed mouth size	转子旋转直径 Rotor Diameter	主电机功率(kw) Main motor power	转刀数量 (件) Moving knife Qty.	定刀数量 (件) Fixed knife Qty.	生产能力(kg/h) Output
GWSS-Z 700	700×700	Φ500	22-37	6/10	4	500
GWSS-Z 800	800×800	Φ600	37-75	6/10	4	600
GWSS-Z 1000	1000×700	Φ700	55-110	10/14	4/6	800
GWSS-Z 1200	1200×800	Φ800	75-132	10/14/18	4/6	1000



整管快撕机
HIGH SPEED PIPE SHREDDER

PE管初级专用破碎机，适用范围φ63-630mm。
PE pipe roughing crusher, Application:φ63-630mm



型号 Model	设备转速(rpm) Rotating speed	动刀数量 Rotary knife	适合管径 Applicable pipe diameter
GWSS-K-400	800	4 or 6	φ63-400mm
GWSS-K-630	600	8 or 10	φ63-630mm

PET瓶破碎清洗脱水及干燥生产线(300-5000kg/h)
PET BOTTLE CRUSHING, WASHING, DEWATERING AND DRYING LINE



采用连续进料，连续清洗的方式。利用具有专利及特殊设计的内部结构与蒸汽加热的高温药剂水清洗瓶体表面，把瓶子表面的PP标签，纸标签，泥沙，胶水，橡胶，金属等杂质通过过滤系统去除，使PET瓶在清洗机腔体内部彻底洗净。透过在线传感侦测系统，自动控制药剂温度及药剂补充，实现生产工艺全自动控制，保证洗瓶质量。

配备自动加药循环过滤系统，利用粗过滤、细过滤、沉淀等方式，把药剂水中的杂质进行分离后再回用，使药剂水中的使用寿命更长。

整瓶清洗工艺对瓶片中的PVC含量都有重要影响。经过高温清洗可以让PVC瓶改变外观，从而易于与PET瓶进行区别，让人工挑选变得非常简单，同时清洗后的瓶子可以让自动挑选系统具有更高的分拣效率。

This machine adopts the automated water circulation system, continuous feeding and washing. This system uses the structure specially designed to cause friction of PET bottles inside the machine, and uses the high-temperature chemical water to remove the labels, dirt, sands, glues, rubbers, metal and other impurities on the bottles surfaces. Through detection system, it is able to conduct automatic control over temperature and chemical supplement, to achieve comprehensive automatic control of production process, and guarantee bottle washing quality.

Supporting chemical water filtration system, using coarse filter, fine filter, sedimentation, separate impurities of chemical water and reuse, thus to prolong the service life of the chemical water.

The bottle Pre-washing unit has a significant impact on the PVC contents of the recycled flakes. High-temperature washing can make changes in the appearance of PVC bottles, making it easy to distinguish in the PET bottles and manual sorting become very simple; meanwhile, the bottles cleaned can allow the automatic selection system with higher sorting efficiency.

型号 Model	产量(kg/h) Output	整线长度(m) Length of line	生产功率 Power consumption	生产方式 Work ways
GWPX 300	300	25	To be determine	Automatic
GWPX 500	500	50	To be determine	Automatic
GWPX 1000	1000	65	To be determine	Automatic
GWPX 1500	1500-2000	75	To be determine	Automatic
GWPX 3000	2500-3000	95	To be determine	Automatic



PE农地膜及滴灌带回收撕碎，清洗，脱泥、秸秆分离及挤干生产线
AGRICULTURAL FILM SHREDDING, WASHING (DESLIMING & STRAW SEPARATION), SQUEEZING LINE (300-2000KG/H)

单轴/双轴撕碎机
single/double
shaft shredder

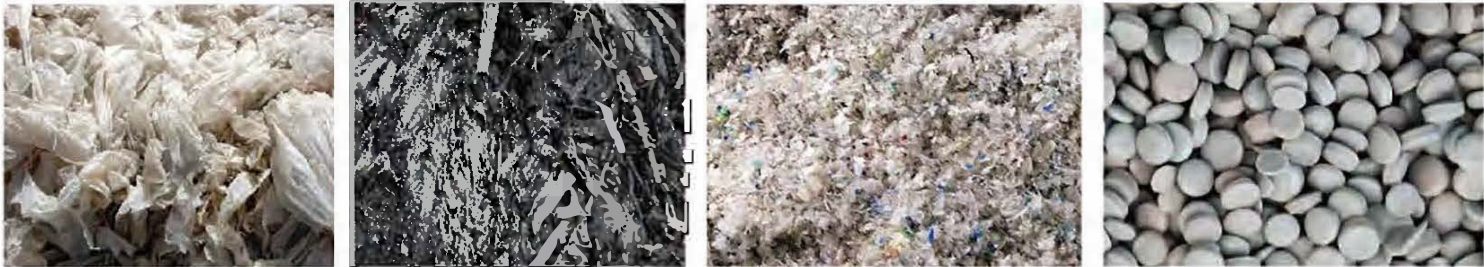
水中搓洗脱泥
Washing for Desliming

水中搓洗及秸秆分离
Washing for straw separation

挤水造粒一体机
Squeezer granulator



型号 Model	产量(kg/h) Output	整线长度(m) Length of line	生产功率 Power consumption	生产方式 Work ways
GWMX 300	300	25	To be Determine	Automatic
GWMX 500	500	50	To be determine	Automatic
GWMX 1000	1000	65	To be determine	Automatic
GWMX 1500	1500-2000	75	To be determine	Automatic



PP PE薄膜清洗线
PP PE FILM WASHING LINE

本公司可为客户提供各种规格、定制的塑料破碎、洗涤系统，以满足现代循环环境日益增长的需求。该系统能够处理各种不同污染程度的塑料材料，包括严重的污染，如油基物质和农业废物。所述输出材料可用于造粒、吹塑、注塑。整个生产线操作简单，效率高，能耗低。

Our company can provide a wide range of standard and customized plastic crushing and washing systems to meet the ever changing and demanding requirements of a modern recycling environment. The systems are capable of processing a wide range of plastic materials with varying levels of contamination including extremely heavy contamination such as oil based substances and agricultural waste. The output material can be applied for granulation, blow molding and blowing injection. The whole production line is easy to operate, efficient and low energy consumption



型号 Model	产量(kg/h) Output	整线长度(m) Length of line	生产功率 Power consumption	生产方式 Work ways
GWMX 300	300	25	To be determine	Automatic
GWMX 500	500	50	To be determine	Automatic
GWMX 1000	1000	65	To be determine	Automatic
GWMX 1500	1500-2000	75	To be determine	Automatic

硬料清洗线
PLASTIC BOTTLES LUMPS DRUMS WASHING LINE



除铁器
Steel Remover



风送及料仓
Air Blower and Silo



高速脱水机
High Speed Dewatering Machine



漂洗池
Floating Washing Tank



开包机
Baler Opener



滚筒筛
Trommel



分选台
Sorting Table



破碎机
Crusher



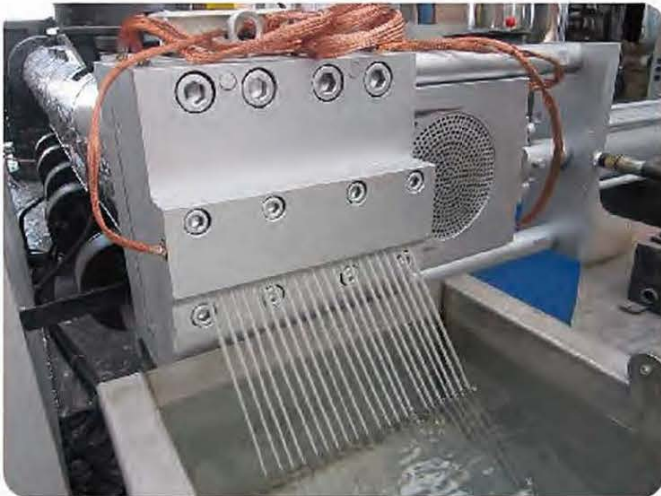
螺旋上料机
Screw Loader



摩擦洗
Friction Washer

密实机造粒生产线（200-800kg/h）
AGGLOMERATOR TYPE PELLETIZING LINE

采用特殊的螺杆设计及不同的配置，适用于生产PP、PE、BOPP、BOPET、BOPA、PA66等多种干燥薄膜塑料的再生。喂料系统采用高转速刀片切割及强制喂料装置。螺杆、机筒经过特殊的表面处理，具有耐磨，混炼效果好，产量高的特性。真空排气或自然排气口的设计，能在生产过程中将水分、废气排除，使出料更稳定，粒子更密实，保证了产品的优良品质。



This pelletizing extruder has special screw design and different configuration, it is suitable for the recycling of PP, PE, BOPP, BOPET, BOPA, PA66, Dry film, etc. The gearbox is high torque designed which attains the functions of low noise and stable operation. The surface of the screw and barrel have been special treated so that the screw and barrel are wear-resistant. They have very good wear properties and mixing effect and the production capacity is high. The extruder has the vacuum vented design which can exhaust the vapor or gas during the production so that the output are more stable and the pellets are more uniform.

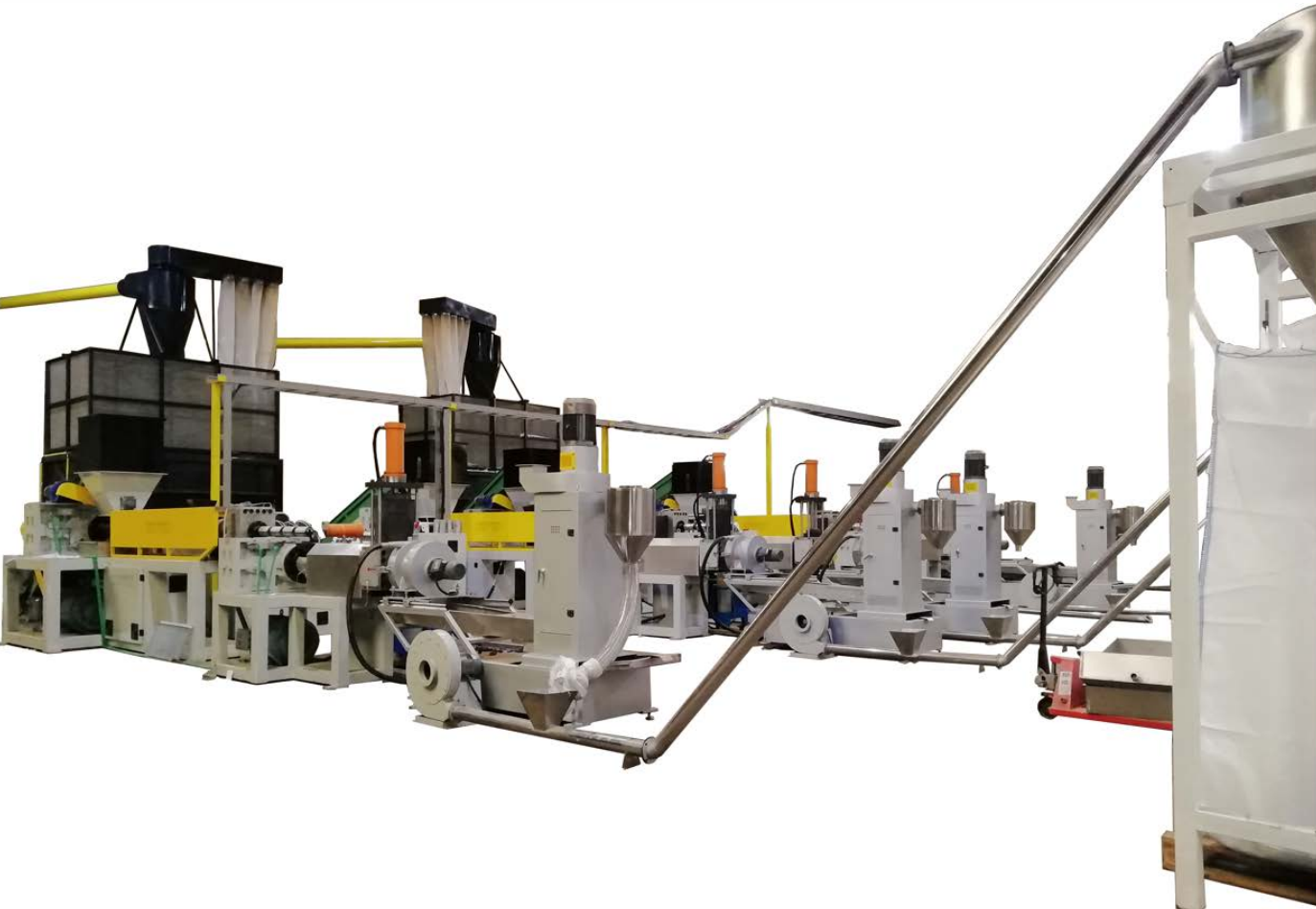
型号 Model	螺杆直径 Screw dia(mm)	长径比 L/D	螺杆转速 Screw speed(rpm)	主电机功率 Power of main motor(kw)	生产能力 Output(kg/h)
GWP85	85	36:1	20-150	55	150-200
GWP90	90	36:1	20-150	75-90	200-300
GWP100	100	36:1	20-150	90	250-350
GWP120	120	36:1	20-150	110-132	300-400
GWP150	150	36:1	20-150	160-200	400-500
GWP180	180	36:1	20-150	250-315	600-800



PE/PP薄膜湿料造粒线(200-1000kg/h)
WET PE/PP FILM PELLETIZING LINE

特殊的锥形螺杆可以有效的增加螺杆的喂料及排水功能。采用电磁加热技术可以使湿薄膜快速的塑化，螺筒上开有排气口，可以使塑料中的水分快速排出，提高成品粒子的质量。螺杆、机筒经过特殊的表面处理，具有耐磨，混炼效果好，产量高的特性。真空排气或自然排气口的设计，能在生产过程中将水分、废气排除，使出料更稳定，粒子更密实，保证了产品的优良品质。

Special conical screw could help enhance the feeding function and drainage function effectively. We adopt electromagnetic heating technology in this machine and it can help wet films rapidly plasticized. There are one air outlet on the barrel and this help moisture discharge to improve the pellets' quality. The surface of the screw and barrel have been specially treated so that the screw and barrel are wearable. They have very good wear properties and mixing effect and the production capacity is high. The extruder has the vacuum vented design which can exhaust the vapor or gas during the production so that the output are more stable and the pellets are more uniform.



型号 Model	螺杆直径 Screw dia(mm)	螺杆长度 Screw length(mm)	电机功率 Motor power(kw)	生产能力 Output(kg/h)
220/150	220/150	3300	90/110	350-450
250/180	250/180	4000	132/160	500-600
220/150*2	220/150*2	3300	90/110	600-800
250/180*2	250/180*2	4000	132/160	800-1000

强制喂料造粒机组
FORCE FEEDER PELLETIZING LINE

强制喂料造粒机组主要被设计用来处理PE,PP,PS,ABS 软硬料的造粒要求。该机组是微脏料造粒的理想设备。我们可以根据物料的具体情况来调整造粒螺杆的长径比。
Force feeder pelletizing line is mainly designed for processing PE, PP,PS, ABS rigid flake or waste film flake. It is an ideal machine for the kinds of little bit dirty material. For screw L/D varies according to the material condition.



Vertical Force Feeder



Side Force Feeder

型号 Model	螺杆直径(mm) Screw diameter	长径比 L/D	主电机功率(kw) Main motor	产量(kg/h) Output	切割方式 Cutting method
SJ120/120	120	25	55	150-200	Die Face Cutting or Strand Cutting
	120	10	30		
SJ140/140	140	25	75/90	250-350	
	140	10	37		
SJ160/160	160	25	160	450-600	
	160	10	45		
Note	The capacity is based on the raw material. The output for rigid flake and film flake are different as well as the material. We offer solution based on the client’ s actual requirements.				

定量喂料造粒线
QUANTITATIVE FEEDING PELLETIZING MACHINE

直接喂料式造粒机是一种通用的再循环造粒机，适用于瓶、管、容器、块状等预破碎的重硬再研磨的颗粒状废渣。适用材料主要有HDPE、LDPE、PP、PA、PC、PU、PBU、ABS等。还可对预压膜片、PP纱线、PE/PP编织袋、PE发泡等轻量化软包装材料进行加工，并在给料斗上加装送料器。进料速度可根据不同物料的形状和重量自动控制和调整，保证进料和产量生产的稳定。当加工刚性再研磨(颗粒)时，可关闭送料装置。

The Repro-Direct model is a universal recycling pelletizing machine suitable for pre-crushed, heavy rigid regrind scraps such as bottles, pipes, containers and lumps in the form of granules. Applicable materials are mainly HDPE, LDPE, PP, PA, PC, PU, PBU, ABS and others. It can also process light-weighted soft packaging material such as pre-crushed film flakes, PP raffia, PE/PP woven, PE foam and many other with the addition of force feeder on the feeding hopper. The feeding speed is controlled and adjusted automatically for different types of material shape and weight to ensure stable feeding and output production. When processing rigid regrind(granule), the feeding device can be switched off.



团粒机
AGGLOMERATOR

团粒机应用于薄膜及化纤回收，刀片可拆卸，易于清洗和维护，产量高，无噪音。

Agglomerator applicable for film or fiber recycling, blade can be assembled. It is easy to be cleaned and maintained. Low noise and high capacity.



型号 Model	容积(L) Volume	电机功率(kw) Motor power	动刀数量 Rotary knife	定刀数量 Fixed knife Qty	转速 Rpm	生产能力(kg/h) Output
GWTL 100	100	37	2	6	1050	100
GWTL 200	200	45/55	2	6	1000	150
GWTL 300	300	75	2	8	950	200-250
GWTL 500	500	90/110	4	8	750	300-400
GWTL 800	800	110/132	4	8	750	550

EPS冷压、热熔及破碎设备
EPS COLD PRESSING, HOT MELTING & CRUSHING RECYCLING MACHINE



挤干压实机
SQUEEZING COMPACTOR

挤干机可以立即做到立即挤干物料。本机配备转动的螺杆以及特制的齿轮箱，可以使薄膜破碎料快速挤干脱水。便于操作，干燥效果能达到92%-95%。

The Squeezer drying machine can dry the film flake immediately. Equipped with rotating screw, special reduction gear box, which could dewater and dry the film flakes. Easy to operate, drying effect can reach to 92%-95%



型号 Model	电机功率(kw) Motor Power	螺杆螺筒材质 Material of Screw and Barrel	螺杆直径 Screw diameter	产物含水量 Final moisture of product	适用物料 Applied material
GWJG 300	18.5/22	45# steel	300mm	5-8%	PP PE wet film
GWJG 380	22/30	45# steel	380mm	5-8%	PP PE wet film

挤水造粒一体机
SQUEEZER GRANULATOR

该设备用于薄膜、编织袋、吨包袋、尼龙等软性塑料的脱水干燥，机器配备先进的螺杆挤压设备，挤干效率高达95%以上。同时可与塑料清洗造粒线直连使用，产量稳定高效，全程自动化。

This machine is used for squeezing and pre-pelletizing PP/PE film, woven bags, ton bags, Nylon etc. It's equipped with advanced screw extrusion system, squeezing efficiency could reach 95%. Also can work in accordance with washing and pelletizing line with stable capacity and whole process automation.



型号 Model	主电机功率(kw) Main motor power	最终含水量(%) Moisture	产量 Capacity(kg/h)
GWJQ 300	55	3-5	300
GWJQ 500	90	3-5	500
GWJQ 800	132	3-5	800

脱标机
LABEL REMOVER



单轴脱标
Single Shaft Label Remover



三轴脱标
Triple Shaft Label Remover



双轴脱标
Double Shaft Label Remover



带水脱标机
Water Type Label Remover

型号 Model	设计 Design	主电机功率 Motor	生产能力 Output(kg/h)	除标率 Label separation rate
Air type	Single shaft	11	500-1000	80-90%
	Double shaft	30	1000-2000	80-90%
	Triple shaft	30	1000-2500	95%
Water type	Single shaft	30	1500-3000	95%

打包机
HYDRAULIC BALER



型号 Model	压力(ton) Pressure	打包尺寸(mm) Balesize	打包重量(kg) Bale weight	效率(bale/hour) Efficiency	功率(kw) Power
GWB-6040	10	600*400	30-50	4-6	2.2
GWB-8060	20	800*600	80-100	4-6	3
GWB-1170	40	1100*700	180-200	4-6	5.5
GWB-1280	60	1200*800	380-420	4-6	11/15
GWB-1280	80	1200*800	450-480	4-6	15
GWB-1280	100	1200*800	500-550	4-6	15
GWB-1510	120	1500*1000	650-700	4-6	15/18.5
GWB-1510	150	1500*1000	850-900	4-6	18.5

切断机
Hydraulic Guillotine



型号 Model	压力(ton) Pressure	刀片长度(mm) Cutter length	有效高度(mm) Cutting stroke	电机(kw) Motor	切割速度(mm/s) Cutting speed
GWG-8	8	660	700	5.5	20-30
GWG-12	12	880	800	7.5	20-30
GWG-16	16	1100	1000	11	20-305